



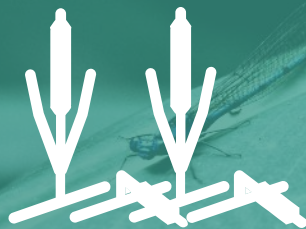
SMARTFARMING

PROBLEM



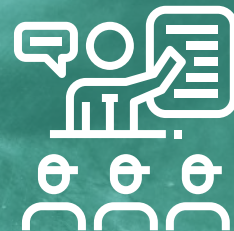
500

Million small-scale
farmers in the world



30-40%

Of crops are lost



1:1000

Advisor – farmer ratio

PROBLEM

A man with a beard and glasses, wearing a light-colored polo shirt with purple stripes on the sleeves, is sitting in a lush green forest. He is holding a piece of paper in his hands. The background is filled with dense foliage and trees.

"The Rainforest Alliance has been providing training to farmers and we have facilities and tools available. However to reach every community in the growing areas is really difficult"

- Neelkant Pandhare, Field Coordinator at Rainforest Alliance

SOLUTION

1



Easy to use
offline apps/sms

2



Practical
Knowledge

3



Data to support
decision making

Improved yield: **10% increase**

Less environmental pollution and cost: **30% decrease in input use**

Cost effective training and support: **86% of farmers learned a new practice**

COMPLETE DIGITAL-AGRI TOOLS PORTFOLIO



FarmCollect: Tool to oversee monitoring and evaluation indicators

Remote sensing platform; Analyzing sugar cane health through (NDVI)

Targeted agronomical information through 3 apps + User data collected.

Expert irrigation advice using soil sensors and weather stations

IRIPO: Targeted agronomical and market information through SMS/App

PRODUCT OVERVIEW



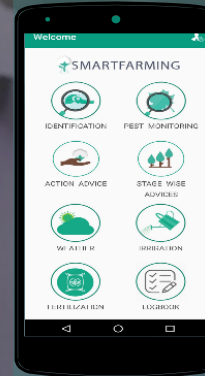
SmartFarming App

Fill farm details and receive Personalized, offline and practical information

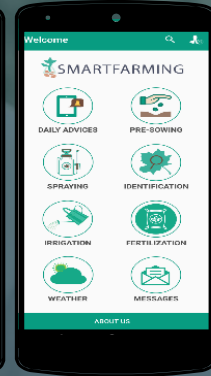
Features

- ✓ Calculation tools for irrigation and fertilizer needs
- ✓ Tailored day-to-day advice
- ✓ Picture based identification of crop stress
- ✓ Weather forecasts
- ✓ Weather based Blight spraying alert for potato farmers
- ✓ Yield estimation tool for coffee estates

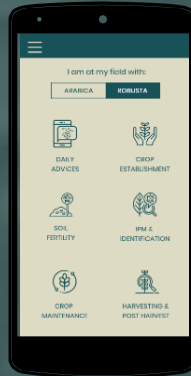
SmartFarming
Cotton India



SmartFarming
Potato India



My Crop
Care
Coffee India

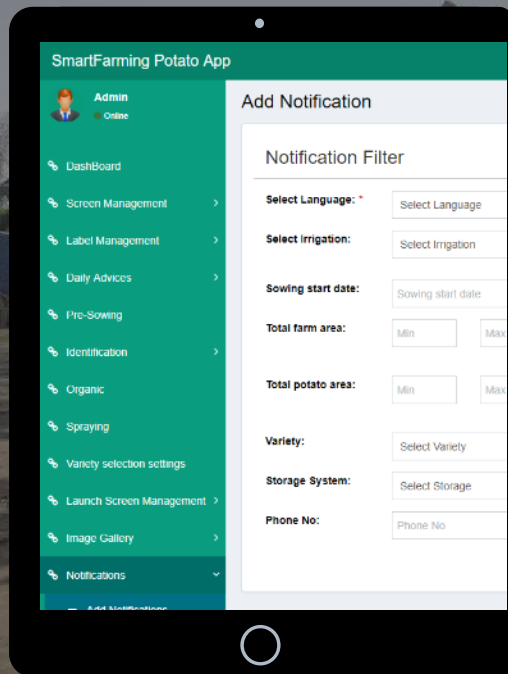


Target: Small-scale farmers 6

PRODUCT OVERVIEW

Management Dashboard & Reports

- ✓ Effectively reach thousands
- ✓ Real time supply chain insights
- ✓ GDPR Proof: organizations and farmers control and share data on their own terms
- ✓ maintaining privacy & security.
- ✓ User behavior tracking + expert insight and models
- ✓ Customized reports; pest and disease outbreaks, quantity and quality forecast data reports for certification.



Target: NGO, cooperatives, and buyers

** Building on the picture is Western the Gaths farming consortium one of the organisations using the dashboard*

PRODUCT OVERVIEW



IRIPO SMS service

Organizations can group farmers on various variables and schedule messages and two-way communication

Features

- ✓ Personalized information directly to phone about:
- ✓ Information on where to sell products, with several options of buyers in the main markets of Chimoio and Beira.
- ✓ Receive access to farmer trainings and advisory services of agricultural experts
- ✓ Improved access to high-quality agricultural inputs

Target: Small-scale farmers ⁸

OUR APPROACH

Problems are best solved by those who experience it

Co creation and design thinking are the stepping stones of each tool.



A photograph showing a person in a light blue shirt holding a smartphone, displaying a green interface. They are in a field of green plants. Two other people are visible: one in a grey shirt on the left and one in a white shirt on the right, both looking at the phone. The person in the white shirt is pointing at a plant leaf. The background is a field of similar green plants.

OUR APPROACH

Preventing is better than curing

Timely actions are stimulated with daily advices, this reduces chemical use.

A photograph of three men in a rural setting. On the left, a man in a white shirt and a white cap looks towards the center. Next to him, a man in a dark shirt also looks towards the center. In the center, a man in a pink shirt is holding and looking at a brochure. The background shows a room with orange walls, a clock, a bell, and a painting of a man in blue attire playing a stringed instrument.

OUR APPROACH

Knowledge transfer is a two way street

SmartFarming emphasizes a 2-way communication: where advices are curated and improved to fit local contexts

Thanks!

Any questions?

You can find us at:

- Wageningen University & Research Campus
- info@smartfarmingtech.com
- www.smartfarmingtech.com

