

Session 1

community-level climate adaptation initiatives





OUR MISSION:
TO SOLVE WATER
PROBLEMS IN ASIA
BY BRINGING
TOGETHER THE BEST
PEOPLE, IDEAS AND
SOLUTIONS FROM
AROUND THE
WORLD





TWA WATER HUB

TWA WATER HUBS
CONNECTING PEOPLE
FOR WATER IN ASIA



**TWA WATER HUB
EDUCATION**



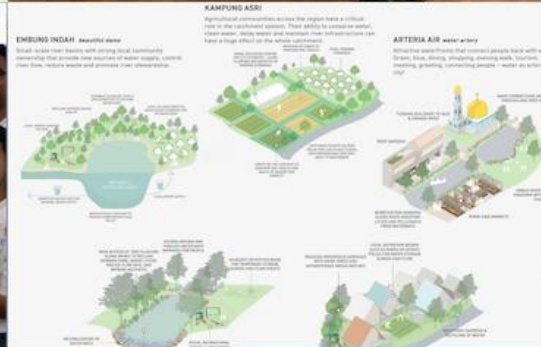
**TWA WATER HUB
KNOWLEDGE**



**TWA WATER HUB
BUSINESS**

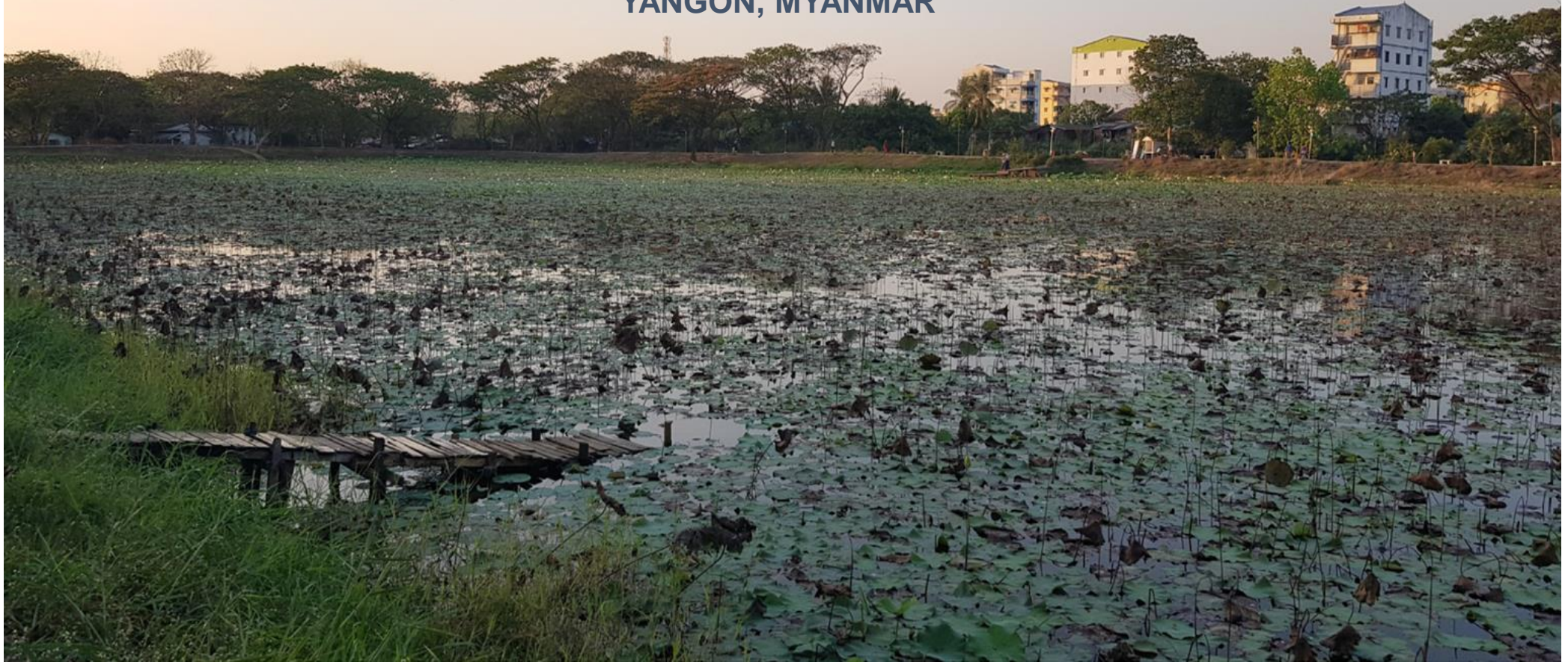


**TWA WATER HUB
COMMUNICATION**



Thaketa Climate Adaptation for Water Security

NETWORK-DRIVEN, COMMUNITY-LEVEL CLIMATE ADAPTATION
YANGON, MYANMAR





Thaketa Climate Adaptation for Water Security Pilot Project

SUPPORT YANGON TO DEVELOP AS A WATER AND CLIMATE RESILIENT CITY.

FOCUS ON COMMUNITY-LEVEL CLIMATE ADAPTATION.

CRITERIA:

- PRACTICAL
- TANGIBLE
- INNOVATIVE
- INSPIRATIONAL
- SCALABLE

ASSIGNED TO THAKETA TOWNSHIP AS MOST FLOOD PRONE AND WATER SCARCE PART OF THE CITY





Drainage interventions

YCDC: to improve drainage towards outlet 1 and outlet 4 (clean, dredge, repair)

Support Ward Officer to complete his work on drainage



Rainwater Harvesting locations

Placemaking locations

Library Tea shop





BLOCK BY BLOCK™

UN HABITAT
FOR A BETTER URBAN FUTURE





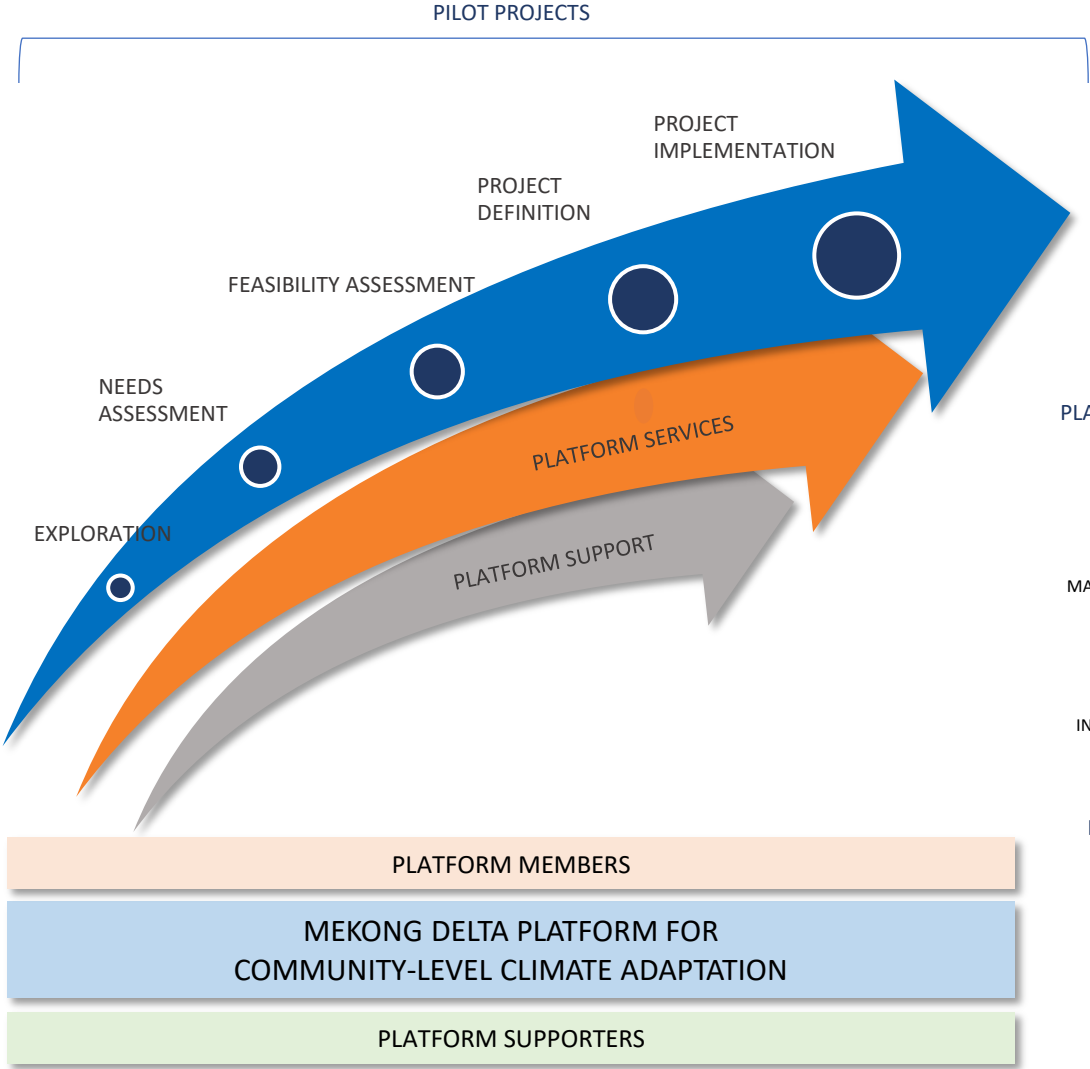
MEKONG DELTA PLATFORM FOR COMMUNITY-LEVEL CLIMATE ADAPTATION

Mekong Environment Forum (MEF) and The Water Agency (TWA) aim to establish a platform that brings together local and international partners that are committed to work together to offer solutions for local farming communities in the Mekong Delta to address critical water, energy and agriculture challenges.

Platform = Vietnamese and international government agencies, private solution providers and knowledge institutes. Every platform member is committed to work together and fairly contribute to and gain from participating. We expect the number of partners and activities to grow as we achieve results over time

Solutions = products and services that are *practical, smart and affordable* and that can be owned and maintained by the local community and local authorities. Solutions include products and technology, but also tools and approaches for community awareness and education and professional training and advice.

PLATFORM APPROACH



SCALING AND REPLICATING OF SUCCESSFUL PILOT PROJECTS

PLATFORM SERVICES

- BUSINESS MATCHMAKING
- KNOWLEDGE SHARING
- EDUCATION & TRAINING
- INTERNATIONAL RELATIONS
- STAKEHOLDER ENGAGEMENT
- COMMUNICATIONS

PLATFORM SUPPORT

- SCHOOLS & UNIVERSITIES
- GOVERNMENT
- FUNDING & FINANCING
- CONSTRUCTION, EQUIPMENT & MATERIALS

TOWARDS A FIRST PILOT PROJECT



Core principles of the Pilot

- Community-level: solutions have a direct benefit for the local communities and can be operated and maintained by the communities themselves (to a large extent)
- Solutions should be integrated to address critical water-energy-food issues at the same time - problems are linked!
- Awareness and education is a foundational activity throughout the pilot. All partners learn together!
- The pilot should be implemented by the local authorities, communities and partners together.
- All solutions and approaches should be scalable and replicable to other communities. Win-win for authorities, communities, local partners and international companies.
- Start small, grow big. Achieve tangible, concrete results first before scaling-up.



POTENTIAL OUTCOMES/BENEFITS

- Concrete, tangible results that have a real, positive impact for local communities, for example:
 - Community can measure and decide on the best approaches to manage its own water, energy and agriculture needs
 - Improved access to clean water for drinking, household and agriculture (less vulnerable to drought)
 - Increased agriculture productivity
 - Saving household budget for water and energy
 - Less waterborne diseases due to pollution
 - Less river pollution (waste and hyacinths)
 - New income opportunities, e.g. from plastic recycling and water hyacinths harvesting
 - more...
- Business case to scale and replicate the pilot (win-win for all partners)
- Successful bottom-up approaches inform important decisions (policy, legislation, investment, ec.) at a Delta system level (bottom-up and top-down go hand-in-hand)

1



2



3



4



5



6



7



8



1



2



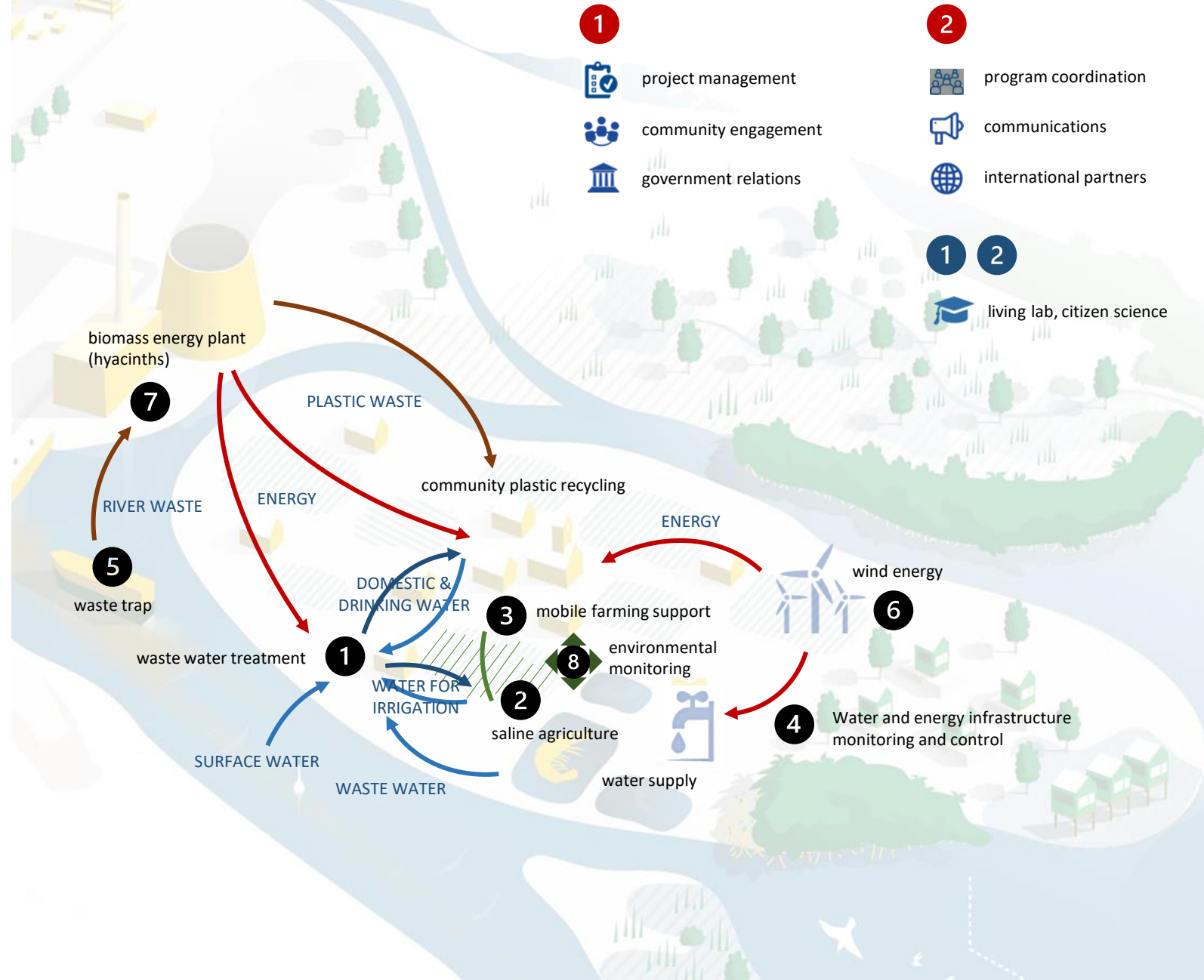
1



2



PILOT CONCEPT



1



2



3



4

DATAwatt

5

CLEARRIVERS

6



7

MILLENNIUM BIO-ENERGY

8



1



2



1



2



Bluecon developed a decentralized 100% physical/chemical process to purify wastewater to re-usable water

1



project management



community engagement



government relations

2



program coordination



communications



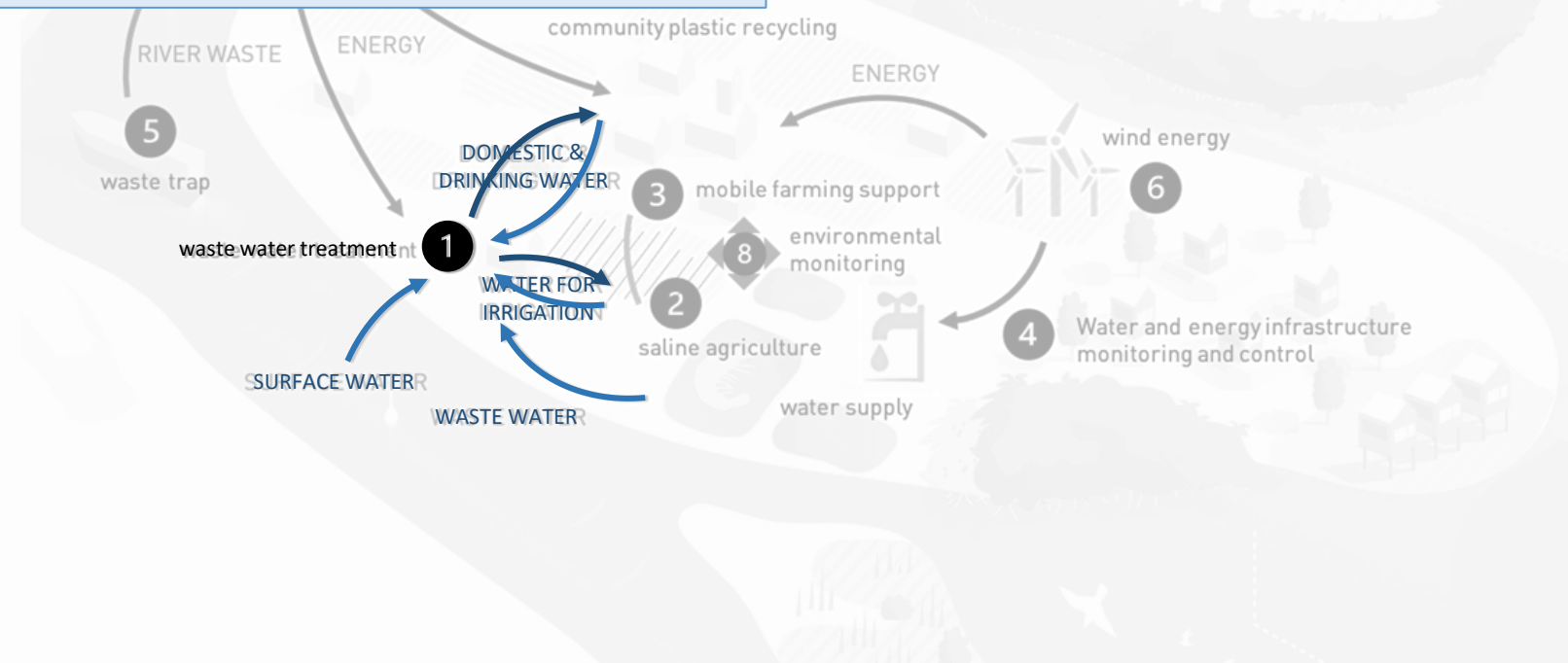
international partners

1

2

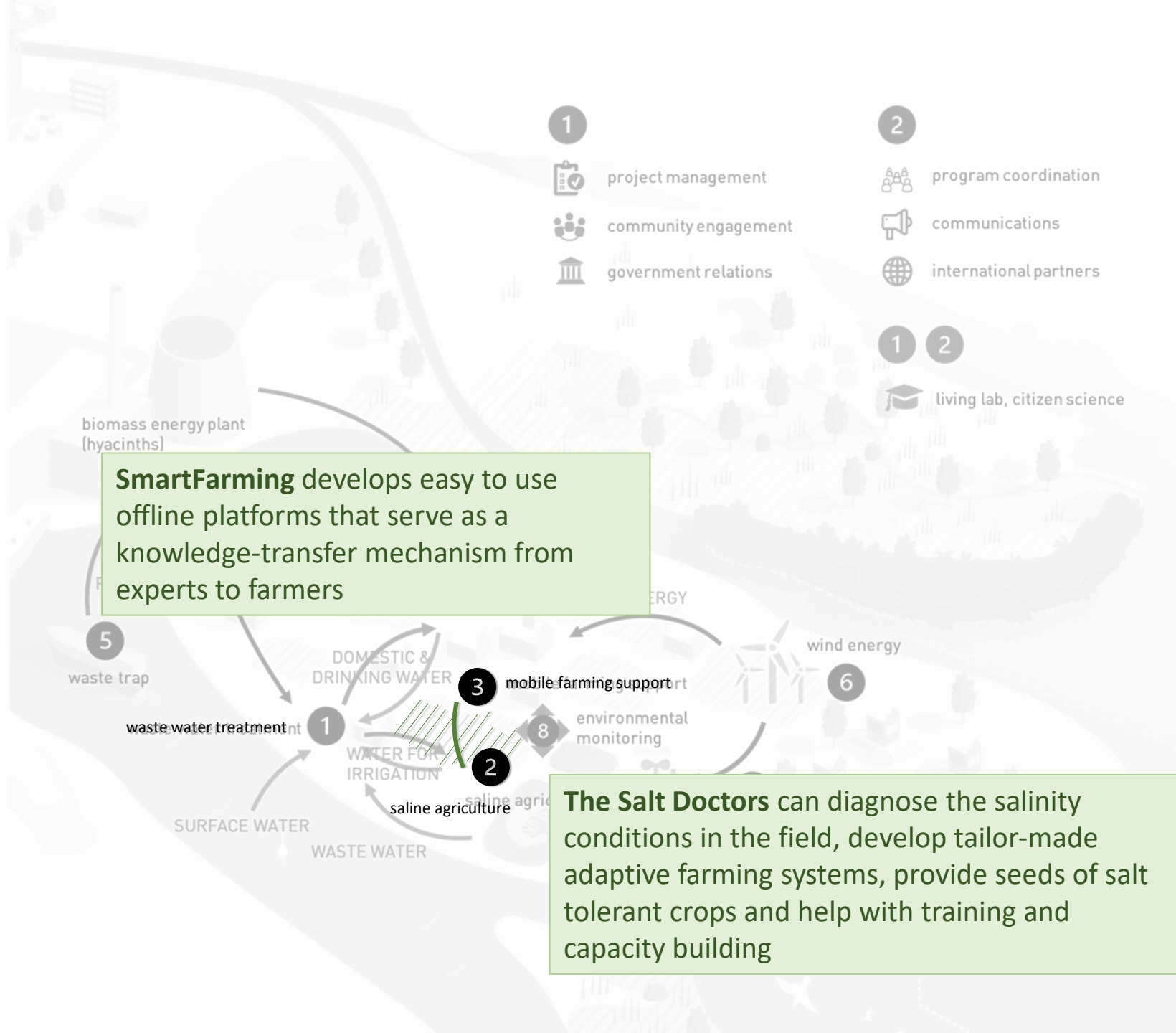


living lab, citizen science





- 1  bluecon
bluecounting wastewater
- 2  **The Salt Doctors**
- 3  **SMARTFARMING**
- 4  **DATAwatt**
- 5  **CLEARRIVERS**
- 6  Flower Turbines, LLC
- 7  **MILLENNIUM BIO-ENERGY**
- 8  metasphere
water data culture
- 1  **MEF**
- 2  **THEWATERAGENCY**
- 1 
- 2  **UNIVERSITY**
OF APPLIED SCIENCES



1



2



3



4



5



6



7



8



1



2



1



2



1



project management



community engagement



government relations

2



program coordination



communications



international partners

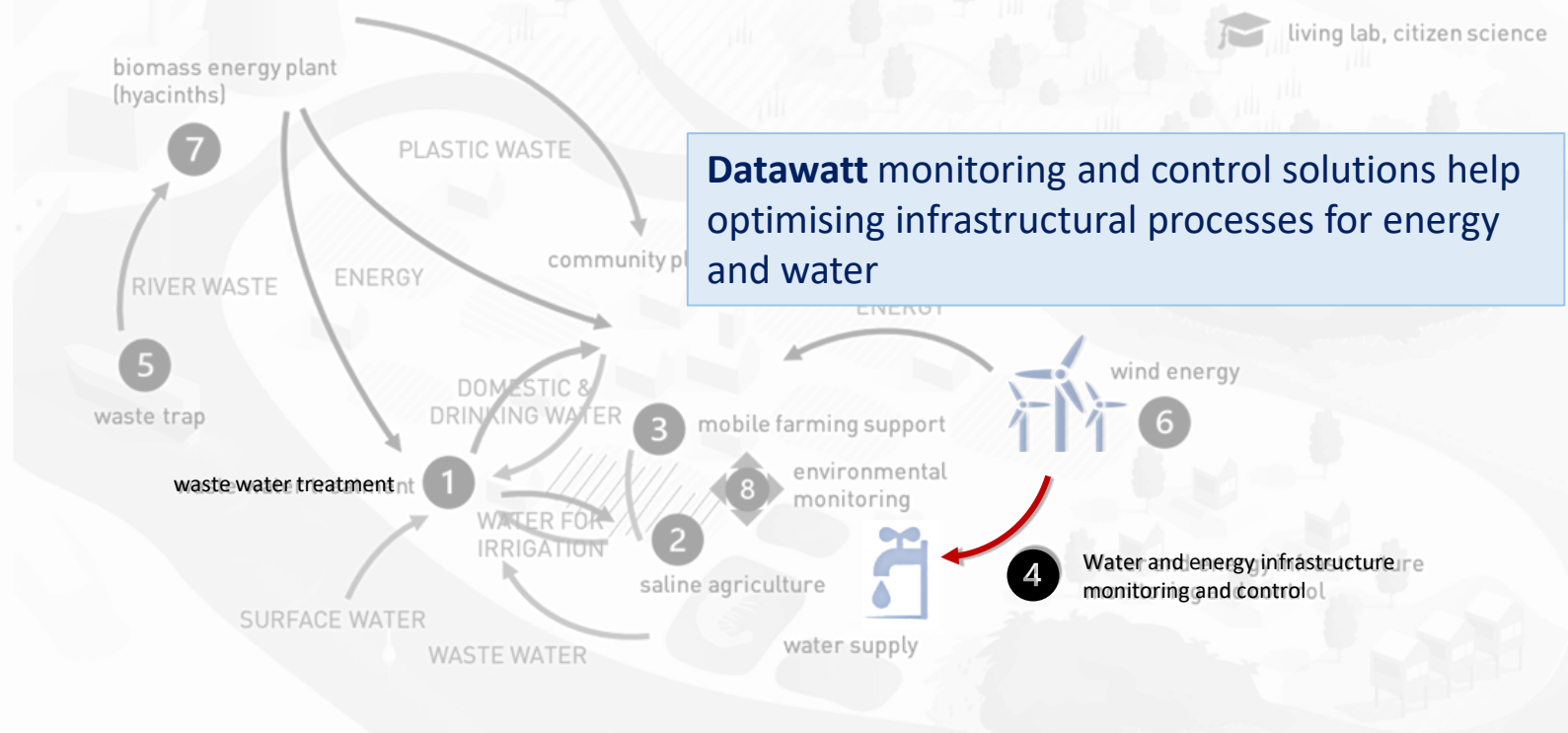
1

2



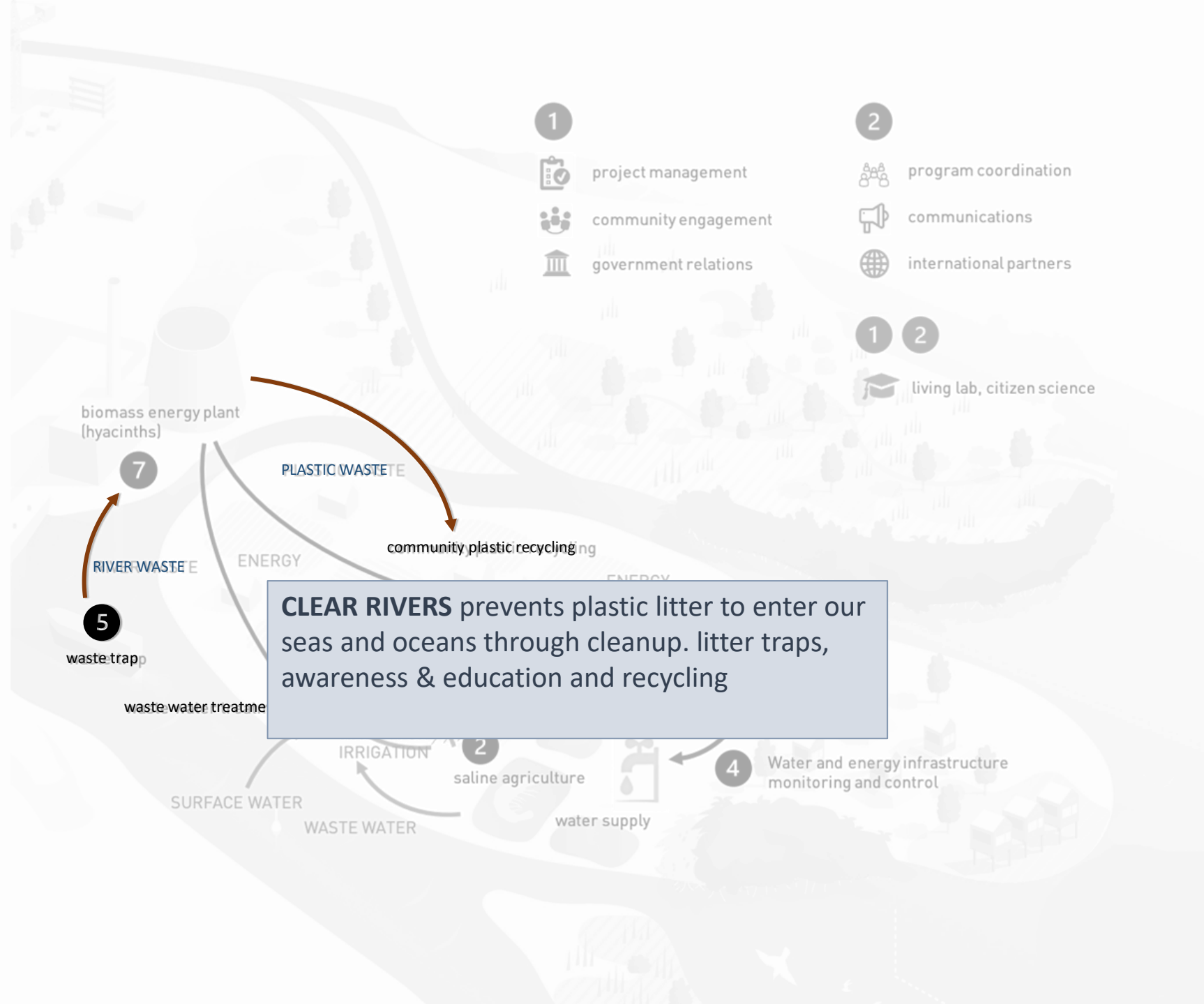
living lab, citizen science

Datawatt monitoring and control solutions help optimising infrastructural processes for energy and water

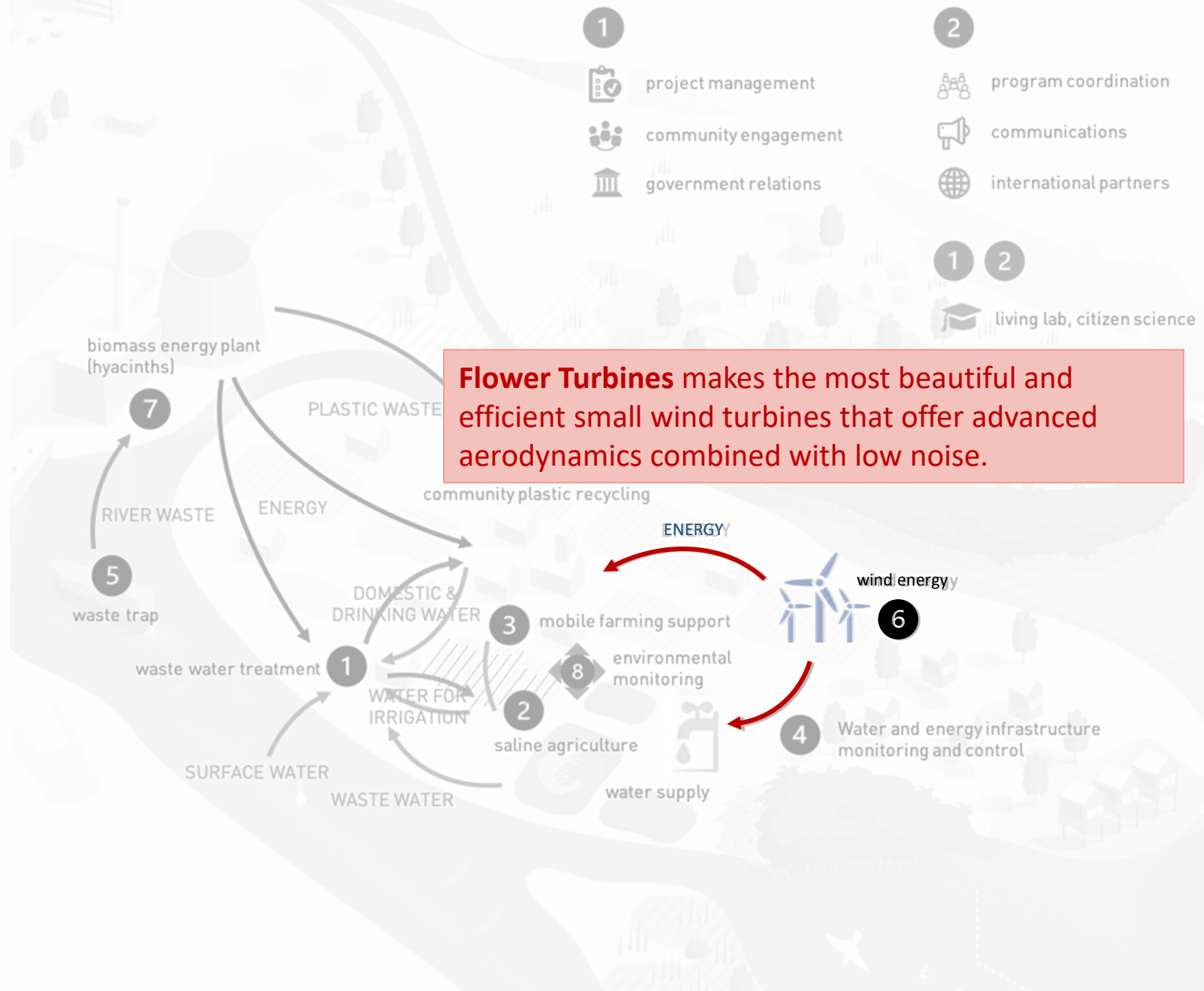




- 1 bluecon
bluecorning wastewater
- 2 The Salt Doctors
- 3 SMARTFARMING
- 4 DATAwatt
- 5 **CLEAR RIVERS**
- 6 Flower Turbines, LLC
- 7 MILLENNIUM BIO-ENERGY
- 8 metasphere
water data culture
- 1 MEF
- 2 THEWATERAGENCY
- 1
- 2 Hz UNIVERSITY
OF APPLIED SCIENCES



- 1  bluecon
bluecorning wastewater
- 2  The Salt Doctors
- 3  SMARTFARMING
- 4  DATAwatt
- 5  CLEARRIVERS
- 6  Flower Turbines, LLC
- 7  MILLENNIUM BIO-ENERGY
- 8  metasphere
water data culture
- 1  MEF
- 2  THEWATERAGENCY
- 1 
- 2  UNIVERSITY
OF APPLIED SCIENCES



- 1 bluecon
bluecorning wastewater
- 2 The Salt Doctors
- 3 SMARTFARMING
- 4 DATAwatt
- 5 CLEARRIVERS
- 6 Flower Turbines, LLC
- 7 MILLENNIUM.BIO-ENERGY
- 8 metasphere
water data culture
- 1 MEF
- 2 THEWATERAGENCY
- 1
- 2 Hz UNIVERSITY
OF APPLIED SCIENCES

Millennium Bio Energy is an energy company that specializes in conversion of water hyacinth biomass to electricity.

- 1 project management
- community engagement
- relations

- 2 program coordination
- communications
- international partners

- 1
- 2 living lab, citizen science



1 bluecon
bluecounting wastewater

2 The Salt Doctors

3 SMARTFARMING

4 DATAwatt

5 CLEARRIVERS

6 Flower Turbines, LLC

7 MILLENNIUM BIO-ENERGY

8 metasphere
make data count

1 MEF

2 THEWATERAGENCY

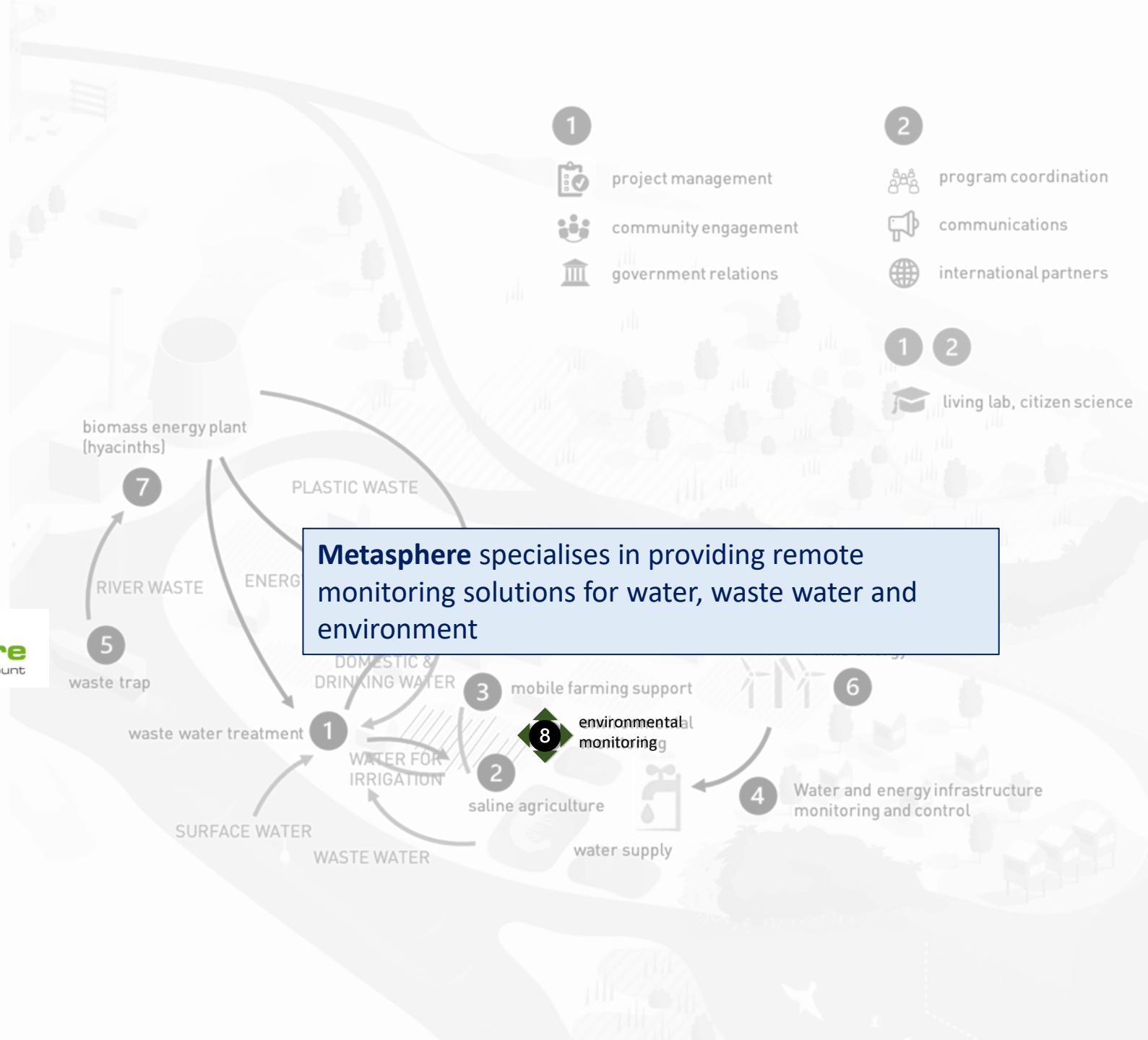
1

2 Hz UNIVERSITY
OF APPLIED SCIENCES

1 project management
community engagement
government relations

2 program coordination
communications
international partners

1 2 living lab, citizen science



Metasphere specialises in providing remote monitoring solutions for water, waste water and environment

1



2



3



4



5



6



7



8



1



2



1



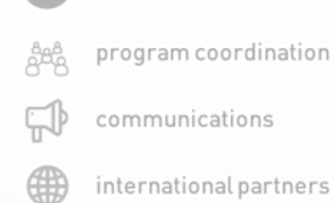
2



1

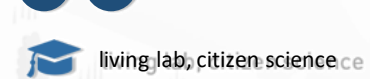


2



1

2



1



2



3



4



5



6



7



8



1



2



1



2



1



project management



community engagement



government relations

2



program coordination



communications



international partners

1

2



living lab, citizen science

